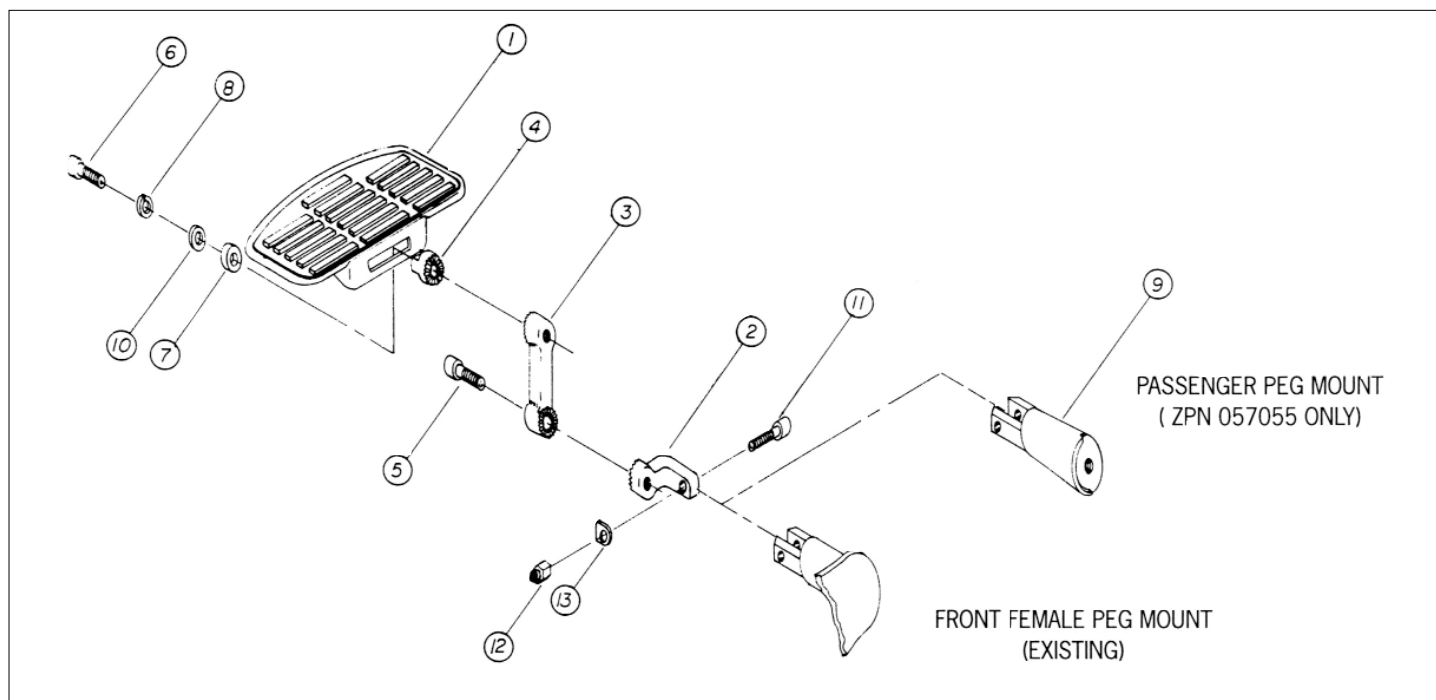




057054 Front / 057055 Rear FXST and Pre-1990 FLST MINI FLOOR BOARD KIT



Adjustable Floorboard Kit 057055, Rear

Nr.	Qty.	Description
1	2	Floorboard
2	2	Pivot
3	2	Dog bone
4	2	Slot adjuster
5	2	7/16 -20 UNF x 1.00 long allen socket head screw
6	2	7/16 -20 UNF x 1.50
7	2	Floorboard washer
8	2	7/16 flat washer
9	2	Passenger peg mount FXST Rear mount
10	2	7/16 flat washer
11	2	3/8 UNC x 1.50 long socket head screw
12	2	3/8 -16 UNC Nylock nut
13	2	Flat spring

Adjustable Floorboard Kit 057054, Front

Nr.	Qty.	Description
1	2	Floorboard
2	2	Pivot
3	2	Dog bone
4	2	Slot adjuster
5	2	7/16 -20 UNF x 1.00 long allen socket head screw
6	2	7/16 -20 UNF x 1.50
7	2	Floorboard washer
8	2	7/16 lock washer
9	2	7/16 flat washer
10	2	3/8 UNC x 1.50 long socket head screw
11	2	3/8 -16 UNC Nylock nut
12	2	Flat spring

NOTE: Use blue Loctite on first three threads of all hardware.

1. Remove existing footpeg.
2. When installing ZPN 057055 replace existing rear peg mount with passenger peg mount **9** secure using existing 1/2 bolt.
3. Install offset star mount **2** into female mount by placing spring **13** into clevis and pushing offset mount in. Align hole and secure using socket head screw **11** and Nylock nut **12**.
4. Loosely install dog bone **3** using socket head screw **5** as shown.
5. Loosely install board to dog bone using socket screw **6** through lock washer **8**, flat washer **10**, thick floor board washer **7** and slider star **4** as shown.
6. Position floorboard as desired, checking all cycle and ground clearances, tighten securely
IMPORTANT!: Zodiac recommends a minimum of 9 ground clearance on all floorboards.
7. Re-check all hardware before test driving motorcycle.